

AC CONTACTOR MECHANICAL INTERLOCK

COMI-CJX2



APPLICATION / DESCRIPTION

Mechanical interlock avoids phase short circuits. As the application of the contactor interlock, so as long as one of the contactor power, the normally closed contact will not be closed, so in the application of mechanical and electrical double interlock, the power supply system of the motor is impossible to phase short circuit, effectively protect the motor, but also to avoid phase short circuit caused by accidents, burning the contactor.

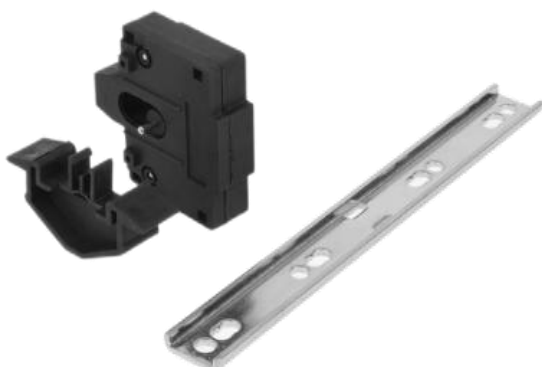
PART NUMBER EXAMPLE

BASE NUMBER	Adapter Type	Frame Size
COMI= contactor mechanical interlock	CJX2	09-32
EXAMPLE	COMI-CJX2-09-32(CONTACTOR MECHANICAL INTERLOCK 09-32)	

DIMENSION AND MOUNTING



Applicable to CIX2-09-32



Applicable to CIX2-40-95



Applicable to CIX2-115-630

